

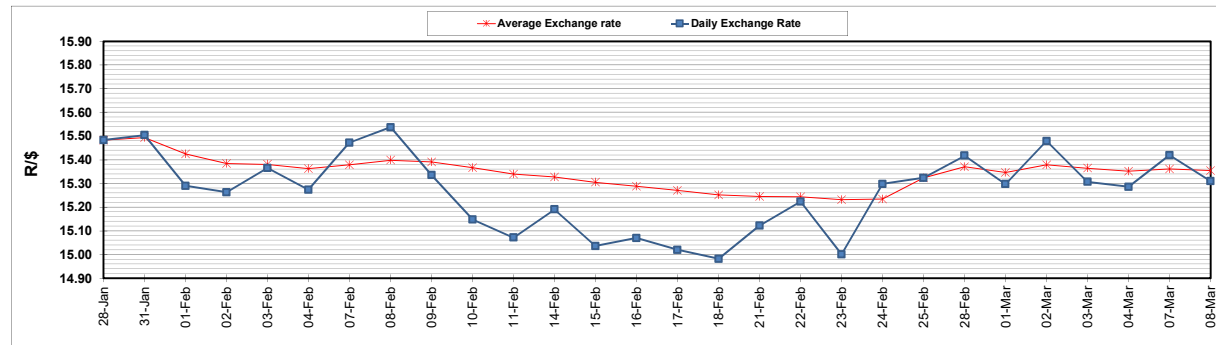
	PETROL 95 ULP	PETROL 93 ULP & LRP	DIESEL 0.05%	DIESEL 0.005%	ILL. PAR.
GAUTENG PUMP PRICE (SA c/l) AS FROM 02/03/2022	2,160.000	2,135.000	-	-	-
WHOLESALE PRICE (SA c/l) AS FROM 02/03/2022	-	-	1,948.880	1,955.280	1,318.688
SINGLE NATIONAL MAXIMUM RETAIL PRICE	-	-	-	-	1,690.000
BASIC FUEL PRICE - 08/03/2022 (SA c/l)	1,453.472	1,428.540	1,679.354	1,709.504	1,599.085
PRESS RELEASE CONTRIBUTION TO BFP 02/03/2022 - 08/03/2022 (SA c/l)	1,100.270	1,085.270	1,107.630	1,114.030	1,097.128
UNIT OVER/(UNDER) RECOVERY - 08/03/2022 (SA c/l)	(353.202)	(343.270)	(571.724)	(595.474)	(501.957)
AVERAGE BASIC FUEL PRICE 25/02/2022 - 08/03/2022	1,283.469	1,262.466	1,367.940	1,384.820	1,320.761
AVERAGE UNIT OVER/(UNDER) RECOVERY 25/02/2022 - 08/03/2022	(232.189)	(226.186)	(308.685)	(320.665)	(269.008)

ANALYSIS MOVEMENT OF AVERAGE OVER/(UNDER) RECOVERY

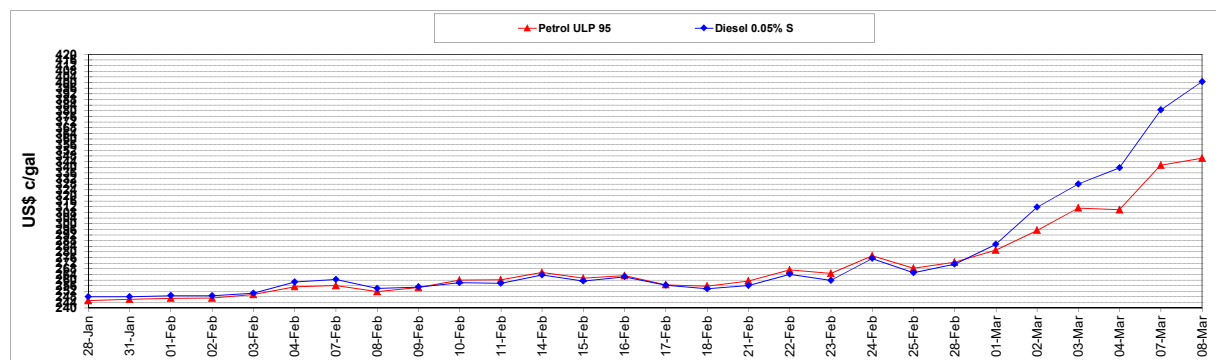
	PETROL 95	PETROL 93	DIESEL 0.05%	DIESEL 0.005%	ILL. PAR.
- MOVEMENT IN INTERNATIONAL PRODUCT PRICES	(222.106)	(216.268)	(297.939)	(309.786)	(258.632)
- MOVEMENT IN EXCHANGE RATE	(10.083)	(9.918)	(10.746)	(10.879)	(10.376)
AVERAGE UNIT OVER/(UNDER) RECOVERY 25/02/2022 - 08/03/2022	(232.189)	(226.186)	(308.685)	(320.665)	(269.008)

R/\$ EXCHANGE RATE - (R/\$15.3105 - 08/03/2022)

EXCHANGE RATE USED IN BASIC FUEL PRICE



INTERNATIONAL PRODUCT PRICES OF BASKET USED IN BASIC FUEL PRICE



BASIC FUEL PRICE IN SA CENTS PER LITRE

